

Doc M Pack with Hand Dryer

TSL.DDA.R1

The TSL.DDA.R1 is a well co-ordinated and compliant Doc M pack for use within any DDA washroom.

Finish	Codes	LRV*
● Satin	TSL.DDA.R1.CS	58
● Black	TSL.DDA.R1.BK	3
● Brass	TSL.DDA.R1.BR	40
● Copper	TSL.DDA.R1.CP	19
● Bronze	TSL.DDA.R1.BZ	17

Light Reflectance Value*



About

The TSL.DDA includes all product listed below and ensures full compliance with Approved Document Part M of the Building Regulations. All products have been designed in conjunction with each other to ensure a consistent and co-ordinated aesthetic. The set is delivered as a single package to ease the onsite installation process.

Standard Products Included

1x	TSL.Mono.DDA	Monolith Basin - (Available RH & LH)
4x	TSL.GR45.600	Straight Grab Bar - 600mm
1x	TSL.GR45	Hinged Grab Bar - (Available RH & LH)
1x	TSL.990	Sensor Deck Mounted Tap / Small
1x	TSL.938	Wall Mounted Cylindrical Pump Soap Dispenser
1x	TSL.650	Adjustable Bottle Trap
1x	TSL.721	WC Sensor Flush Valve
1x	TSL.CISTERN	Cistern Compatible with TSL.721
1x	TSL.45	Single Toilet Roll Holder
1x	TSL.323	Toilet Brush with Holder
2x	TSL.974	Coat Hook
1x	TSL.3002	High Speed Hand Dryer
1x	TSL.WH750	Wall Hung 750mm Projection WC
1x	TSL.522	DDA Backrest
1x	TSL.SZPC	DDA Single Zone Assistance Kit
1x	TSL.MR20	Wall Mounted Mirror / Rectangular

Alternatives

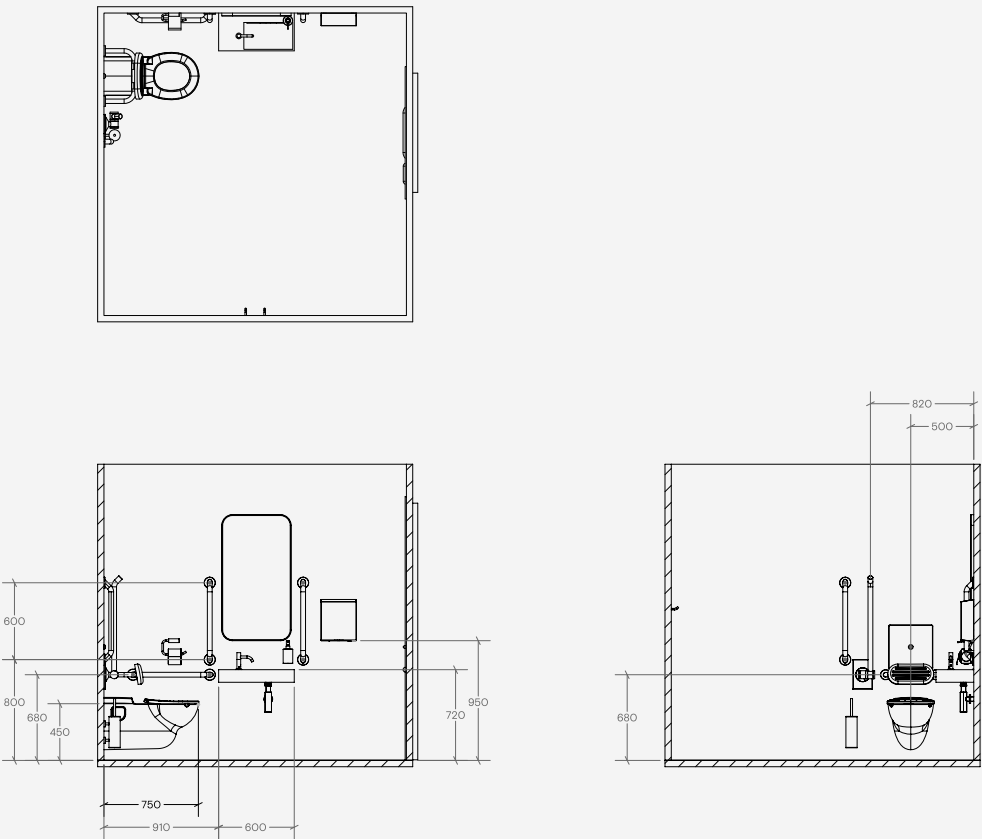
1x	TSL.FS750	Floor Standing 750mm Projection WC
----	-----------	------------------------------------

Key Components/Spare Parts

Doc M Pack
TSL.DDA.R1

Hand Dryer
TSL.3002

+ Technical drawing



Warranty & Spare Parts

For warranty terms and conditions please visit www.thesplashlab.com
If additional spare parts are required and are not listed above, please contact us at info.uk@thesplashlab.com

Related Products



Double Toilet Roll Holder
TSL.46



25L Waste Receptacle
TSL.279



Wall Mounted Waste Bin
TSL.909



Straight Grab Bar - 450mm
TSL.GR45.450